



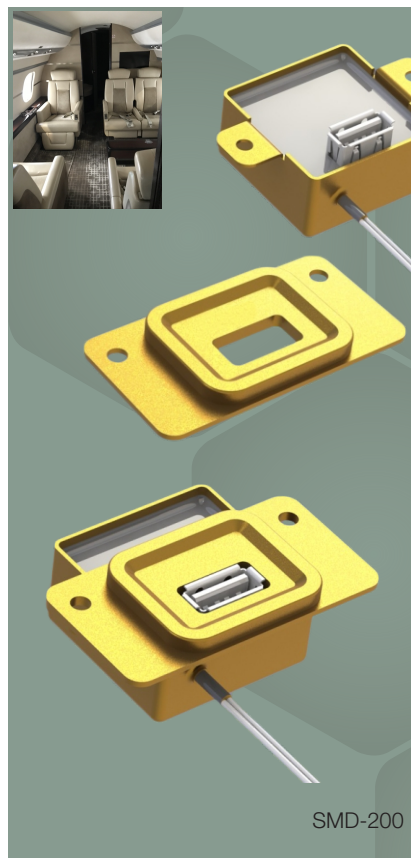
Aerospace Devices Inc.

SmartDock. Smallest Ruggedized, Water-Proofness

USB A PED Charger Available **USB In-Seat Charger**

SMD-200™ USB Internal Power Supply is Encapsulated by a Harsh Environment

Potting Compound.



The **SmartDock™** charges the latest portable electronic devices without the need for an external power outlet. As a DO-160 certified component, it satisfies the highest standards of the aerospace industry. The SmartDock PCB Power supply is encapsulated in a waterproof, Harsh Environment Potting Compound and is the most compact and lightweight device of its kind on the market, and is extremely easy to install. It also protects itself and the charging device against external short circuits and power surges. ASD Inc. offers customization for the internal signature in order to charge special devices that may not recognize the default signature. The default signature is made for Apple iPads, iPods and iPhones as well for most standard USB-charged devices such as music players, digital cameras, smartphones and tablets. A discrete backlight is also available inside the USB connector for night usage. The **SmartDock™** is highly recommended for **SkyPad™** owners as it has the necessary power to keep iPads charged during heavy use.

The SmartDock™ faceplate offers more flexibility to the OEM for customized installations. Various plating options are available, allowing the SmartDock™ to seamlessly blend in with the aesthetics of the existing controls in the cabin. The SmartDock™ can also be ordered without any plating, enabling the OEM to custom plate them independently using the same plating company as the rest of the controls in the cabin.

SmartDock Faceplate Optional, Call for Quote. PN: 908-2044-XXX where XXX is color plating information

FAA DO160F, TCA Letter of Assist, TSO Pending

Ordering Information

SMD-200 Aviation's Lightest, Smallest USB A PED, EFB Charging Ports

PART NAME: SMARTDOCK SMD-200 USB A In-Seat charger

Part (order) # 908-2040-001

Test Report No. PR009251 Rev. 3

Certification Plan CP09106-1

QTP-9082040 Rev. E

TCCA STC Approval and Design Data.

INSTALLED: Bombardier Global Airframe.

Global 8000, Global 7500, Global 6500, Global 5500

Aerospace Devices Inc.

18 Corriente, Irvine, CA 92614

Email: rpecanic@aerospacedevices.com

Website: www.aerospacedevices.com

Phone: 949 795 2889

© Copyright 2021 Aerospace Devices. All Rights Reserved.

CHARGING THE FUTURE

www.aerospacedevices.com

**AEROSPACE
& DEFENSE REVIEW
2024**

**USB CHARGING PLUG & DEVICES
COMPANY OF THE YEAR**



Specifications

Input power current 14V to 28V

Maximum output current 3A at 5V

Main power typical current 0.5A at 28V

Reverse power input connection protection

Short circuit output protection

Thermal protection

Backlight USB Connector

Width 2.08 in

Depth 1.3 in

Height 0.8 in

Weight 0.05 lb

Wire length 6 in

Positive Wire - White

Negative Wire - White / Black

Section **2.1 Test Matrix RTF DO-160F**

4.5.1 Ground Survival Low Temperature

4.5.1 Short-term operating low temperature

4.5.2 Operating Low Temperature

4.5.3 Ground Survival High Temperature

4.5.3 Short-term Operating High Temp.

4.5.4. Operating High Temperature

4.6.1 Altitude

4.6.3 Overpressure

5.0 Temperature Variation

6.3.1 Standard Humidity Env.

7.2.1 Operational Shock

7.3.1 Crash Safety (Impulse)

7.3.3 Crash Safety (Sustained)

8.0 Vibration S Curve

13.0 Fungus Resistance

15.0 Magnetic Effect

16.6 Power Input

17.0 Voltage Spike

18.0 Audio Frequency Susceptibility Power Inputs

19.0 Induced Signal Susceptibility

21.4 Conducted Emissions

21.5 Radiated Emissions

25.0 Electrostatic Discharge

Requirement Category

A-55C

A1 -40C

A1 15C

A1 +85C

A1 +70C

A1 +55°

A1 15,000 Ft.

A1 Standard

C 2°C/Min

A Standard

B Standard

A Standard

B Impulse

C

F By Analysis

Z < 0.3 m inside the aircraft

B 28VDC Nom

B 56VDC/2usec

A Standard

B Impulse

C

F By Analysis

Z < 0.3 m inside the aircraft

B DC Input Power Leads

BC +28VDC

M

M

A Aerospace Env.